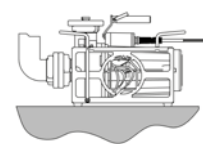
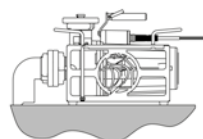


MINI-CHIEMSEE MOBILE SPECIALITY PUMP

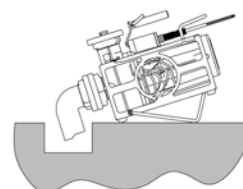
for strongly soiled sewage and waste water including solids



Basic position



Low level pumping



Deep level pumping

ADVANTAGES AT A GLANCE

- **Dry run capable**
due to dry and endurance run suitable double mechanical seal
- **Low level pumping**
down to a few millimetres depth due to the patented Spechtenhauser intake nozzle
- **Motor protection switch**
with overcurrent protection and temperature monitoring with restart inhibit for optimal safety
- **Capacity**
up to 1600 l/min
- **Trouble-free handling**
due to single-hand carrying handle with abseiling eyelet and stainless steel carrying frame
- **Deep level pumping**
due to the patented Spechtenhauser flap system
- **Blockage-free**
for solids up to 65 mm in size
- **Optimum mobility**
due to compact dimensions and low weight of 34 kg
- **Continuous operation**
with 3 kVA DIN generators (B 1100 version) or 5 kVA DIN generators (other versions)



Sealing

with dry-run and endurance-run suitable double mechanical seal made of SiC/SiC and SiC/Coal

Impeller

patented Spechtenhauser impeller made of corrosion-free, wear-resistant, self-cleaning aluminium bronze

Motor protection switch

with 16 A shock-proof plug protection class IP68, overcurrent protection, temperature monitoring with restart inhibit D-version: CEE motor protection plug, 400 V/ 16 A, 5-pin, with rotating field control unit, phase inverter, ON/OFF push button, protection class IP54

Power cable

20 m, heavy duty H07RN8-F-cable (4G1,5+2x0,75), colour: yellow, simply changeable, cable inlet with bend protection made of stainless steel

Single-hand carrying handle

with abseiling eyelet

Carrying frame

made of stainless steel with 2 handles and integrated cable rewind

Intake socket

made of PE-HD with B- or C-Storz coupling

Coupling wrench

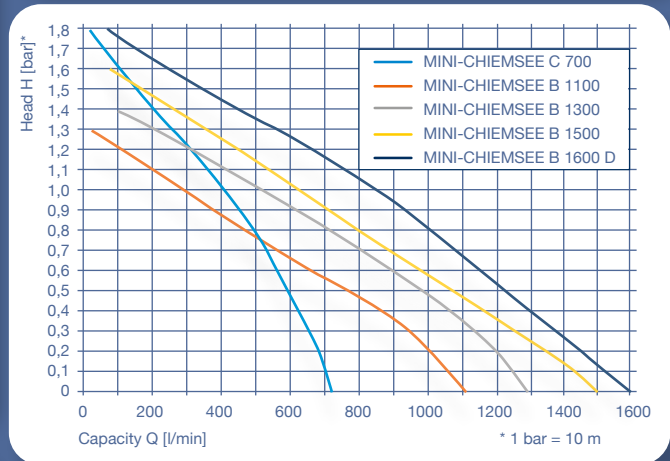
for B- and C-Storz-couplings

Housing

made of saltwater-proof aluminium alloy

Screw connections

made of stainless steel



Non-return flap

with B- or C-Storz coupling for suction up to 5 m height

PVC spiral hoses

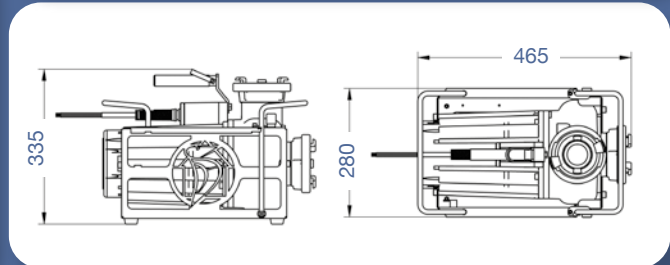
with B- or C-Storz-couplings

Flat intake socket

with integrated non-return flap for low level pumping in case of low water level

Portable Residual Current Devices (230/400 V)

230V/16A, residual current 30 mA, pluggable or installed in the power cable



Type	C 700	B 1100	B 1300	B 1500	B 1600 D
Voltage U	1~230 V	1~230 V	1~230 V	1~230 V	3~400 V
Frequency f	50 Hz	50 Hz	50 Hz	50 Hz	50 Hz
Power consumption P1	2,2 kW	2,2 kW	2,5 kW	2,7 kW	2,7 kW
Protection class	IP68	IP68	IP68	IP68	IP68
Nominal current I	11,7 A	8,7 A	12,4 A	15,1 A	5,7 A
Connections	2"/C-Storz	2½"/B-Storz	3"/B-Storz	3"/B-Storz	3"/B-Storz
Max. solid size	Ø 50 mm	Ø 55 mm	Ø 65 mm	Ø 65 mm	Ø 65 mm
Weight including cable	36 kg	37 kg	38 kg	39 kg	34 kg

Pump performance according to DIN EN ISO 9906								
Type	Head H [bar]	0	0,3	0,6	0,9	1,2	1,5	1,8
C 700	Capacity [l/min]	730	660	570	460	320	160	20
B 1100		1120	960	670	390	120		
B 1300		1300	1150	910	630	330		
B 1500		1500	1270	990	720	460	170	
B 1600 D		1600	1380	1160	940	670	360	70